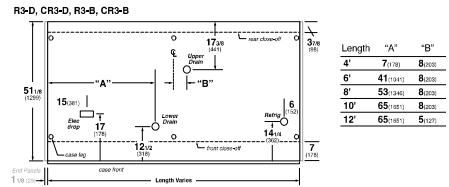
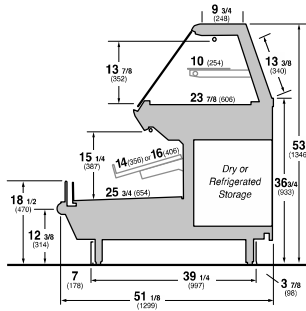




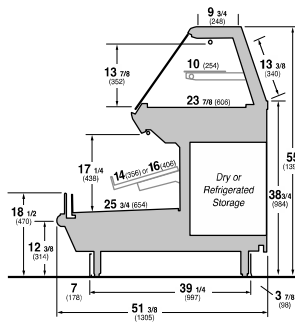
Hussmann refrigerated merchandisers configured for sale for use in the United States meet or surpass the requirements of the DOE 2017 energy efficiency standards.



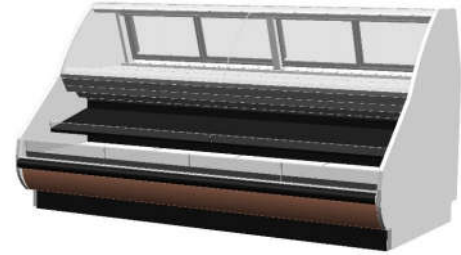
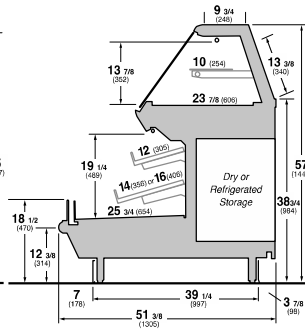
R3-D
Deli Service Straight Glass / Self-Service



R3-D +2
Deli Service Straight Glass / Self-Service +2 height



R3-D +4
Deli Service Straight Glass / Self-Service +4 height



REFRIGERATION DATA:

CASE LENGTHS/ WEDGES	CASE USAGE	CAPACITY TOP/FRONT *** (BTU/HR/FT)		TEMPERATURE (°F)			DISCHARGE AIR VELOCITY (FT/MIN)
		RATING CONDITION		EVAPORATOR		DISCHARGE AIR TEMP	
		NSF 7	AHRI 1200	NSF 7	AHRI 1200	NSF 7	
4',5',6', 8',10',12'	DELI & BAKERY	250 / 600	160 / 540	20	24	TOP 26 FRONT 30	TOP 150~175 FRONT 175~200
4',5',6', 8',10',12'	REAR STORAGE	110	90	20	26	32~34	380~600

CASE LENG H	EST. REFG. CHRG. (404A) (LBS)	20°F GLYCOL 6° RISE TOP		20°F GLYCOL 6° RISE FRONT		20° GLYCOL 6° RISE REAR STORAGE	
		GPM	PSI	GPM	PSI	GPM	PSI
		4'	1.0	0.4	0.7	1.1	2.2
5'	1.3	0.4	1.3	1.3	3.4	0.2	0.2
6'	1.5	0.5	2.0	1.5	4.9	0.2	0.3
8'	2.1	0.7	3.7	2.0	2.4	0.3	0.5
10'	2.7	0.8	6.0	2.5	4.1	0.4	0.8
12'	3.2	1.0	8.7	3.0	4.8	0.5	1.1

**FRONT DISCHARGE AIR MEASURED INSIDE AIR CURTAIN HONEYCOMB

***REFRIGERATION NOTES:

- 1) BTU'S INCLUDE 3 ROWS (2 TOP; 1 FRONT) CANOPY LED LIGHTS AND NO SHELF LIGHTS
- 2) ADD 10 BTU'S PER FOOT/PER SHELF FOR OPTIONAL LED SHELF LIGHTS
- 3) 2H OPTION; ADD 30 BTU/HR/FT FOR THE FRONT, ADD 5 BTU/HR/FT FOR THE REAR STORAGE.
- 4) 4H OPTION; ADD 110 BTU/HR/FT FOR THE FRONT, ADD 10 BTU/HR/FT FOR THE REAR STORAGE.
- 5) AHRI 1200 RATING POINT FOR ENERGY CONSUMPTION COMPARISON ONLY
- 6) USE DEW POINT FOR HIGH GLIDE REFRIGERANTS. CARE SHOULD BE TAKEN TO USE THE DEW POINT IN P/T TABLES FOR MEASURING AND ADJUSTING SUPERHEAT. ADJUST EVAPORATOR PRESSURE AS NEEDED TO MAINTAIN THE DISCHARGE AIR TEMPERATURE SHOWN.
- 7) RATING CONDITION IS NSF TYPE I, 75°F/55% RH

REFRIGERATION DATA CONTINUED:

ELEC. THERMOSTAT / AIR SENSOR SETTINGS			DEFROST TYPE	TIME (MIN)	DEFROST FREQUENCY (#/DAY)	TERM. TEMP (°F) COIL ONLY	DRIP TIME	DEFROST WATER (LBS/DAY/FT)	FAN BLADE DIA.	FAN BLADE PITCH
USAGE	CUT IN (°F)	CUT OUT (°F)								
TOP	29	26	OFF TIME	30	4	45	N/A	0.34	6.75"	NO SHELF: '3' & '4'-10°; '5'-15° W SHELF: 15°
FRONT	31	28				48	N/A	2.8	6.75"	3' & 4':15°; 5': 20°
REAR STORAGE	37	36				45	N/A	0.15	6.75"	30°

ELECTRICAL DATA:

STANDARD FANS, HEATERS, LED LIGHTS (115 VOLT)

CASE LENGTH	TOTAL EVAPORATOR FANS			CANOPY LIGHTS LED TOP & FRONT		OPTIONAL LED SHELF LIGHTS (FRONT AND TOP)		OPTIONAL LED 2ND SHELF (FRONT) +2H & +4H ONLY		MAX. LED LOAD (W/ ALL OPTIONS)		ANTI-SWEAT HEATERS		REFRIGERATED REAR STORAGE (OPTIONAL) EVAP FANS			CONVENIENCE OUTLETS (OPTIONAL)		
	# OF EVAP FANS	AMPS	WATTS	AMPS	WATTS	AMPS	WATTS	AMPS	WATTS	AMPS	WATTS	AMPS	WATTS	# OF EVAP FANS	AMPS	WATTS	# OUTLE TS	VOLTS	AMPS
4'	3	0.4	24	0.3	31	0.2	21	0.1	10	0.5	62	0.8	97	1	0.3	8.8	1	115	15
5'	3	0.4	24	0.3	39	0.2	26	0.1	13	0.7	78	1.1	122	1	0.3	8.8	1	115	15
6'	5	0.6	40	0.4	46	0.3	31	0.1	15	0.8	93	1.3	147	1	0.3	8.8	1	115	15
8'	6	0.7	48	0.5	62	0.4	41	0.2	21	1.1	124	1.7	197	1	0.3	8.8	1	115	15
10'	6	0.7	48	0.7	78	0.5	52	0.2	26	1.4	156	2.1	247	1	0.3	8.8	1	115	15
12'	9	1.1	72	0.8	93	0.5	62	0.3	31	1.6	185	2.6	297	1	0.3	8.8	2	115	30

OPTIONAL HIGH OUTPUT LED LIGHTS (115 VOLT)

CASE LENGTH	CANOPY LIGHTS H.O. LED TOP & FRONT		OPTIONAL SHELF (FRONT AND TOP)		OPTIONAL 2ND SHELF (FRONT) +2H & +4H ONLY		MAX. H.O. LED LOAD	
	AMPS	WATTS	AMPS	WATTS	AMPS	WATTS	AMPS	WATTS
4'	0.4	46	0.1	15	0.1	15	0.7	76
5'	N/A	N/A	N/A	N/A	N/A	N/A	N/A	N/A
6'	0.7	78	0.2	26	0.2	26	1.1	130
8'	0.8	91	0.3	30	0.3	30	1.3	152
10'	N/A	N/A	N/A	N/A	N/A	N/A	N/A	N/A
12'	1.2	137	0.4	46	0.4	46	2.0	228

END PANEL WIDTH KEY

# OF END PNLS	END PNL WIDTH (IN.)	TOTAL ADDED LENGTH (IN.)
1	1.125	1.125
2	1.125	2.25